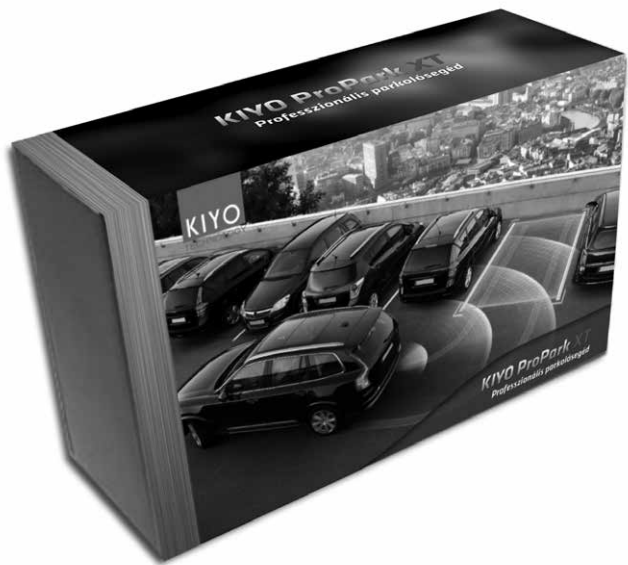


# KIYO ProPark

## Parking Assistant

### Installation and Operation Manual





The KIYO ProPark Parking Assistant is a useful accessory for any vehicle. Unlike the everyday Reverse Backup Radars, which usually warn about objects farther than 30-50 cm, the ProPark is able to accurately detect objects from a 25 cm distance. Additionally, the transponders of the device can be built into the indentations of the bumper or into the grille of the vehicle, therefore it is un-necessary to drill deep holes into the bumper itself. The product became worthily famous for its small, 2.5 cm sized sensors and for its outstanding price. The KIYO ProPark is available in packages with 2 or 3 transponders.

## **1. PURPOSE OF THE DEVICE**

---

The purpose of the KIYO ProPark Parking Assist is to make the maneuvering and parking of the vehicle easier. Unlike the everyday reverse backup radars, the KIYO ProPark can detect objects in a 25-cm-close vicinity, which is especially useful when parking in a garage or in a narrow parking lot. Attention! Do not rely on the device alone and always park your vehicle with caution.

## **2. OPERATION OF THE DEVICE**

---

The KIYO ProPark Parking Assist uses an infrared light to measure the distance of different objects to the vehicle. Upon closing on an object (a building, another vehicle, a railing or a pedestrian), the device continuously measures its distance to the vehicle and when it is dangerously close, the Parking Assist warns the driver with sound- and light-signals.

## **3. USE OF THE DEVICE**

---

Always keep the transponders of the device clean, especially in rainy or snowy weather, otherwise the efficiency of the device might significantly decrease. In some situations, the device may signal late or not at all due to external circumstances. This is not caused by the malfunction of the device, but by the laws of physics and other external factors (solar radiation, refraction, rainy weather, snow, dirty transponders, etc.).

The device is [e7] certificated. The KIYO ProPark Parking Assist is device designed to facilitate safe parking, but it does not replace the prudent driving by any means. The device uses the open 904 Nm wavelength, therefore it may cause disturbance in devices using the same wavelength, for example, some police LIDARs. For this reason, the manufacturer and the distributor warns the user not to use the device in countries where such equipment is against the law. It is also advised to turn the device off when driving above 15 km/h. The manufacturer and the distributor is not liable for any fine caused by the use or the incorrect installation of the device, for other damages and for accidents that were caused by the driver's negligence.

e7 03 0018

#### 4. INDOOR UNIT (INTERFACE)

---



**Speaker:**

The device gives sound signals through the speaker upon activation or upon detecting a closing object.

**Volume control switch (VOL and OFF):**

The device can be turned on or off with the volume control switch, also the volume of the speaker can be adjusted with this. (When using an auxiliary switch, it is not necessary to activate the device with the volume control switch.)

**PWR LED status indicator:**

When the PWR LED status indicator is green, the device is activated.

**FRONT LED status indicator:**

The FRONT status indicator is green when the transponders are correctly connected into the two FRONT sockets on the backside of the interface. If this indicator does not light up, the connection might be incorrect or the transponders might be defective. When one of the transponders are detecting a closing object, the device warns the driver, furthermore, the LED indicator turns red and starts flashing.

**AUX LED status indicator:**

The AUX status indicator is green when the transponder is correctly connected into the AUX socket on the backside of the interface. If this indicator does not light up, the connection might be incorrect or the transponder defective. When the transponder connected to the AUX socket is detecting a closing object, the device warns the driver, furthermore the LED indicator turns red and starts flashing. The third transponder goes into the AUX socket.

**MUTE button:**

When receiving information about a closing object, the sound alarm can be muted with this button.

**DC 12V Power Supply socket:**

The power cable of the device must be connected into this socket.

### **FRONT and AUX transponder sockets:**

The transponders must be connected to these sockets.

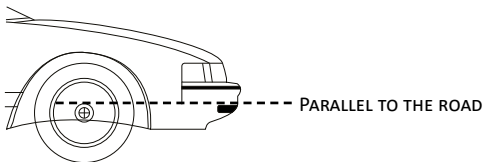
## **5. INSTALLATION OF THE KIYO PROPARK PARKING ASSISTANT**

---

The most important factor in the efficiency of the KIYO ProPark XT Parking Assistant is the number of transponders and their correct installation. The structure and the size of the car determines the number of transponders required for achieving maximal efficiency. Before the installation, decide whether you want a front or a front-and-rear Parking Assist. Ask the opinion of an expert about the required number of transponders and their placing locations.

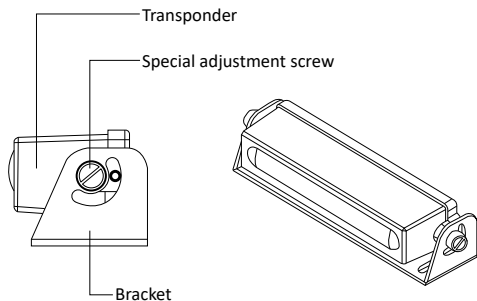
Ask the opinion of our customer service or ask the location and contact information of the nearest workshop. We are always ready to help!

**The most important part of the installation is the correct placement of the transponders. The transponders must be placed parallel to the geometric centerline of the vehicle and they must face forward. If they are following the arc of the bumper or its grille, the placing is not correct!**



**Another important rule is that the transponders must be aligned parallel to the road, they cannot face too much up or down.**

**Maximum 5% of difference is allowed. With the help of the special ad-justment screw, the correct alignment can be easily achieved.**

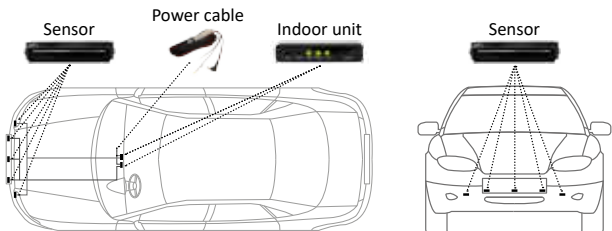


**It is also very important that there cannot be any object before the transponders (windscreen, bumper, grille, etc.). The device measures the distance between the objects and the vehicle by emitting infra-red light and detecting the reflecting light, therefore, the transpond-ers must “see” the road. If you could only install the transponders in a place, where the vertical grille of the bumper is before them, the device will still work, but with less efficiency.**

## **6. FRONT PARKING ASSIST FOR CARS**

Recommendations for the installation (Using 1 KIYO ProPark device with 3 transponders in a set and with 2 transponders in a set)

---



After following the previous instructions and successfully determining locations and the number of transponders, the next step is to find a suitable location for the brackets. (If necessary, remove the bumper or the grille of the bumper.) The brackets can be fixed with the help of the packaged screws or with the Velcro tapes (in the latter case, the drilling of the bumper is not necessary).

Place the transponders into the bracket and with the special adjustment screws align them according to the rules mentioned before. NEVER drill the transponders!

Lead the cables of the transponders through the car into the cabin. The cables must not touch any rotating, moving or hot part of the car (radiator, fan, engine block)! The cables must not strain, but cannot be loose either! They can be fastened with the packaged cable ties. Never knot or break the cables! Damaged cables may result in the malfunction of the transponder and the interface, which might result in losing the warranty.

With the help of the double-sided adhesive, place the indoor unit (interface) of the KIYO ProPark Parking Assistant in the cabin of the car. It can be placed above or below the dashboard; you decide which spot is more suitable for you. By using an auxiliary switch, the interface can be installed hidden behind the dashboard, but in this case, only the sound signal warns the driver to the dangers. In case of a stealth installation, the Parking Assist can be turned on or off with this auxiliary switch.



After installing the interface, connect the JACK connectors of the transponders into the FRONT and AUX sockets. Plug the connector of the Power Cable into the DC12V socket, then connect the positive cable (+) to the vehicle's positive terminal and the negative cable (-) to the vehicle's negative terminal or to the chassis. The color and the labels of the cable help in the correct wiring.

When using more than one set of KIYO ProPark devices, it is recommended to use an auxiliary switch or a wireless unit.

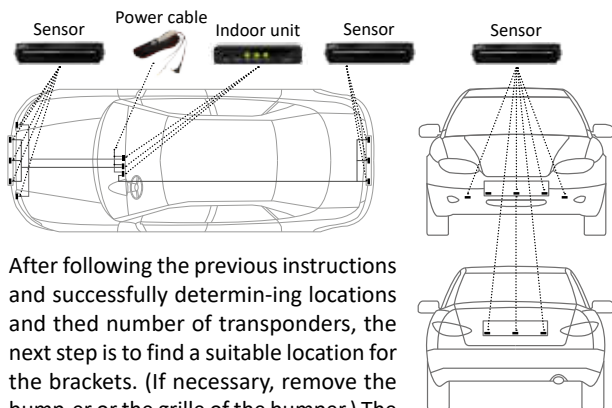
**More regarding information can be found in the following pages.**

## 7. FRONT AND REAR PARKING ASSIST FOR CARS

Recommendations for the installation

(Using 2 KIYO ProPark device with 3 transponders in a set and using 1 KIYO ProPark device with 2 transponders in a set)

---



After following the previous instructions and successfully determining locations and the number of transponders, the next step is to find a suitable location for the brackets. (If necessary, remove the bumper or the grille of the bumper.) The brackets can be fixed with the help of the packaged screws or with the Velcro tapes (in the latter case, the drilling of the bumper is not necessary).

Unpack one of the devices that has 3 transponders and the one that contains 2 transponders. Install these 5 sensors into the front bump-er of the vehicle. The 3 left-out transponders of the other device will go to the rear of the vehicle, next to the license plate lights. Place the transponders into the bracket and with the special adjustment screws align them according to the rules mentioned before. NEVER drill the transponders!

Lead the cables of the transponders through the car into the cabin. The cables must not touch any rotating, moving or hot part of the car (radiator, fan, engine block)! The cables must not strain, but cannot be loose either! They can be fastened with the packaged cable ties. Never knot or break the cables! Damaged cables may result in the malfunction of the transponder and the interface, which might result in losing the warranty.

The next step is to place the indoor unit (interface) of the KIYO Pro-Park inside the cabin of the car. One interface can only operate 3 transponders, therefore, in the case of a front- and rear parking assist system, you have to install 3 interfaces for the 8 transponders (2 KIYO ProPark device with 3 transponders in a set and 1 KIYO ProPark device with 2 transponders in a set). By using an auxiliary switch, the interface can be installed hidden behind the dashboard, but in this case, only the sound signal warns the driver to the dangers. In case of a stealth installation, all 3 of the Parking Assist de-vices can be turned on or off with this auxiliary switch.

After installing the interfaces, connect the JACK connectors of the transponders into the FRONT and AUX sockets. Plug the connector of the Power Cable into the DC12V socket, then connect the positive cable (+) to the vehicle's positive terminal and the negative cable (-) to the vehicle's negative terminal or to the chassis. The colors and the labels of the cables help in the correct wiring.

In case of using more than one KIYO ProPark devices, it is recommended to install an auxiliary switch as well.

More regarding information can be found in the following pages.

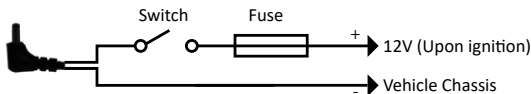
## 8. INSTALLING THE AUXILIARY SWITCH

(For turning all of the KIYO ProPark devices on or off at the same time.)

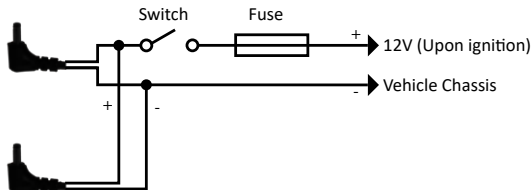
---

If you wish to use an auxiliary switch for the Park Assist devices, ASK THE HELP OF AN EXPERT OR CALL OUR CUSTOMER SERVICE! Without proper expertise, you may cause malfunction in both the Parking Assist and in your car! THE MANUFACTURER AND THE DISTRIBUTER IS NOT LIABLE FOR ANY DAMAGES IN THE VEHICLE OR THE DEVICE THAT WAS CAUSED BY INCORRECT INSTALLATION! The following installation guide has only informative purposes, do not rely on the guide only!

You can order the auxiliary switch set from our distributors or from our central customer service. The set contains an auxiliary switch, a 3-wire cable and a proper connector.



Wiring in case of more than one set of KIYO ProPark devices:



When using more than one set of KIYO ProPark devices, it is recommended to use an auxiliary switch to easily turn the devices on or off at the same time.

## **TROUBLESHOOTING, WARRANTY**

---

If you become uncertain at any point of the installation or any questions arise regarding the installation or the use of the device, please contact one of our workshops or our customer service.

### **QUICK SOLUTIONS TO SOME PROBLEMS**

---

#### **The device does not turn on:**

1. Ignite the engine of the vehicle and turn the device on with the volume control switch!
2. If the device will not turn on, make sure that all the connectors are plugged in correctly and that the cables are undamaged.
3. If the device still not turning on, check the fuses of the vehicle, by following the User's Manual of the car. If necessary, replace the fuse.
4. If the device still not turning on, check the glass fuse of the device's power cable. Replace the glass fuse if necessary.
5. If the problem persists, contact our customer service!

#### **The Parking Assist does not indicate closing objects:**

1. Make sure that the device is turned on.
2. Follow the steps of the previous "The device does not turn on" point.
3. If all the parts are undamaged, check the FRONT and AUX status indicators, if they are not green than check the connection of the transponders again.
4. If they are connected properly, but the LED indicators do not light up, please contact our customer service!

#### **The transponder cables are not long enough:**

In this case, you may buy additional cables to extend the length of the transponder cables, please contact our distributors or customer service!

The device is E7 certificated. The KIYO ProPark Parking Assist is device designed to facilitate safe parking, but it does not replace the prudent driving by any means. The device uses the open 904 Nm wavelength, therefore it may cause disturbance in devices using the same wavelength, for example, some police LIDARs. For this reason, the manufacturer and the distributor warns the user not to use the device in countries where such equipment is against the law. It is also advised to turn the device off when driving above 15 km/h. The manufacturer and the distributor is not liable for any fine caused by the use or the incorrect installation of the device, for other damages and for accidents that were caused by the driver's negligence.





